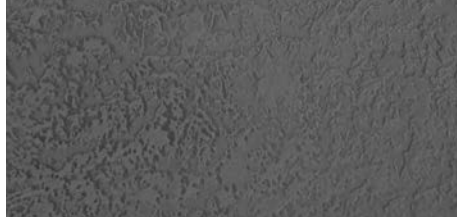


VELVET MOLTEN BLACK
D.STR.E.708

Available in:
-Laminate -Self Adhesive



VELVET MOLTEN ASH
D.STR.E.709

Available in:
-Laminate -Self Adhesive

Please consider the nap direction of the surface before further processing in product installation. If design panels are not installed in the same direction, there will be a visual color difference.

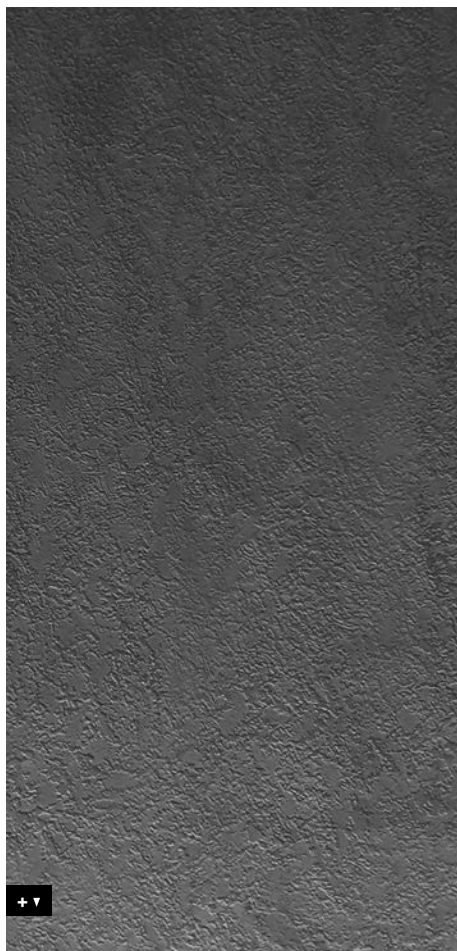


□ VELVET MOLTEN BLACK
D.STR.E.708

Photo: © istock.com

DIMENSIONS:

39" x 102" (1000 mm x 2600 mm)



ELEMENTS TEXTILES

Materials **inc**
mi source for interiors

MOLTEN ASH

PRODUCT CHARACTERISTICS

	LAMINATE	Self-Adhesive
Surface material *	PET fibre	
Base material	HIPS	
Material thickness mm	1.7	2.94
Max. relief height mm	2.2	2.44
Temperature resistance	until 122 °F	
Wet room suitability	■■■■□	
Rolled packable Carton 480 x 480 mm, lay rolled goods flat upon receipt	✓ decor side outside, max. 3 pcs/carton	✓ decor side inside, max. 3 pcs/carton
Smallest bending radius	150 mm	
Weight / panel lbs.	~ 7.9	~ 9.3

* The product is delivered without a protective film.

PROCESSING

	LAMINATE	Self-Adhesive
Cutting, punching	✓	✓
Drilling	✓	✓
Sawing	✓	-
Milling	--	-
Laser cutting	✓	✓
Thermoforming	✓	-
PVA pressing	✓	-
Digital printing	-	-
Screen printing	-	-

LAMINATE Self-Adhesive

Magnetic from 3 sheets	✓
Cuttings	✓
Flammability ASTM E84	-
Flammability EN13501-I	-