



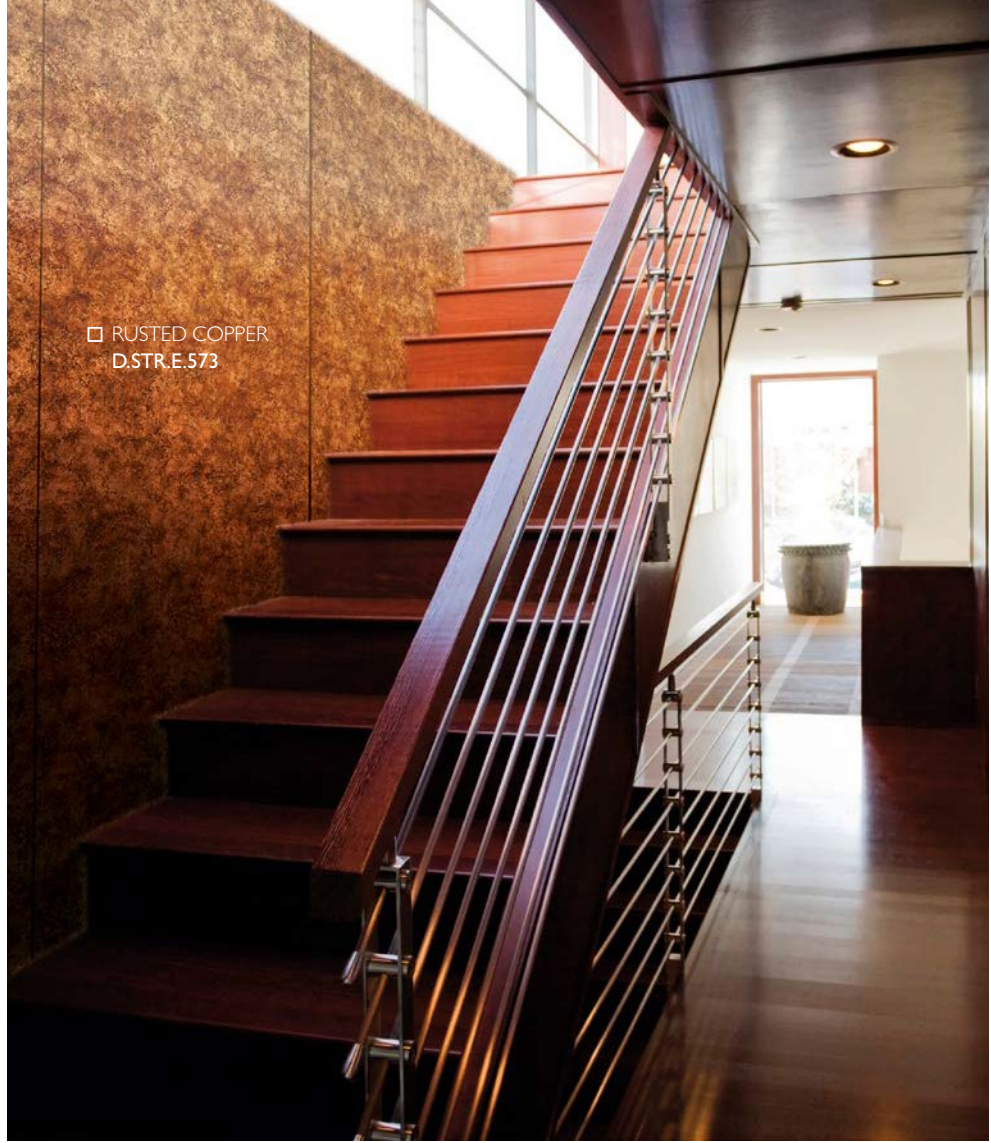
RUSTED COPPER
D.STR.E.573

Available in:
-Laminate -Self Adhesive



RUSTED SILVER
D.STR.E.574

Available in:
-Laminate -Self Adhesive



□ RUSTED COPPER
D.STR.E.573

DIMENSIONS:

39" x 102" (1000 mm x 2600 mm)



ELEMENTS VINTAGE

RUSTED SILVER

Materials inc
mi source for interiors

PRODUCT CHARACTERISTICS

	Self-Adhesive	
	LAMINATE	
Surface material	Print	
Base material	HIPS	
Material thickness mm	1.0	1.13
Temperature resistance	until 122 °F	
Wet room suitability	■■■■□□	
Abrasion resistance	■■■■□□□□	
Rolled packable Carton 480 x 480 mm, lay rolled goods flat upon receipt	✓ decor side outside, max. 6 pcs/carton	✓ decor side inside, max. 6 pcs/carton
Smallest bending radius	150 mm	
Weight / panel lbs.	~ 6.0	~ 7.3

PROCESSING

	Self-Adhesive	
	LAMINATE	
Cutting, punching	✓	✓
Drilling	✓	✓
Sawing, milling	✓	-
Laser cutting	✓	✓
Hot bending	✓	-
Thermoforming	✓	-
PVA pressing	✓	-
Digital printing	✓*	
Screen printing	✓*	

* own printing test required, samples are gladly provided

Self-Adhesive
LAMINATE

Magnetic	from 3 sheets	✓
Cuttings		✓
Flammability	ASTM E84	✓
Flammability	EN13501-1	✓