



PUNCHED LAVA
D.STR.E.836

Available in:
-Laminate -Self Adhesive

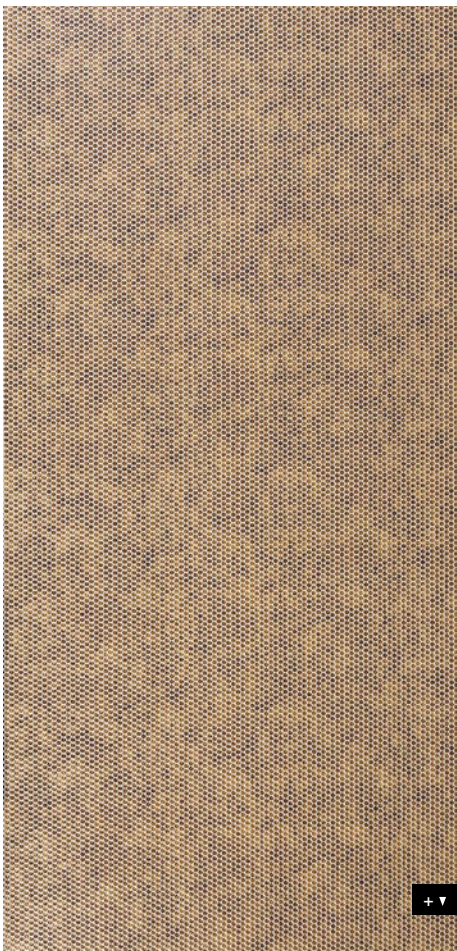


PUNCHED LAVA
D.STR.E.836

Photo Wilhelm Radinger

DIMENSIONS:

39" x 102" (1000 mm x 2600 mm)



ELEMENTS TEXTURE

PUNCHED LAVA

Materials **inc**
mi source for interiors

PRODUCT CHARACTERISTICS

	LAMINATE	Self-Adhesive
Surface material *	Print	
Base material	HIPS	
Material thickness mm	1.0	1.13
Max. relief height mm	1.5	1.63
Temperature resistance	until 122 °F	
Wet room suitability	■■■■□□	
Abrasion resistance	■■□□□□□□	
Rolled packable Carton 480 x 480 mm, lay rolled goods flat upon receipt	✓ decor side outside, max. 6 pcs/carton	✓ decor side inside, max. 6 pcs/carton
Smallest bending radius	150 mm	
Weight / panel lbs.	~ 6.0	~ 7.3

* The product is delivered without a protective film.

PROCESSING

	LAMINATE	Self-Adhesive
Cutting, punching	✓	✓
Drilling	✓	✓
Sawing	✓	-
Milling	✓	-
Laser cutting	✓	✓
Hot bending	✓	-
PVA pressing	✓	-
Digital printing	-	-
Screen printing	-	-

LAMINATE Self-Adhesive

Magnetic	from 3 sheets	✓
Cuttings		✓
Flammability	ASTM E84	✓
Flammability	EN13501-1	✓