

TECHNICAL DATA

ARIA: Concrete & Rust HPL Sheets

PRODUCT DESCRIPTION

- The carrier board is a 0.9 mm HPL-board. The rear is HPL - raw.
- The top is coated with a flexible, mineral coating at a thickness of 1 - 7 mm. This is plastic-bound and can easily be processed with conventional carbide-equipped carpentry tools.
- Aria is classified according to DIN 13501-1 as flame retardant B-s1, d0.
- The surfaces are painted with a matte varnish.
- For a higher strain, e.g. on horizontal areas, we recommend an additional matte protective coat of varnish.
- For highly stressed areas, such as worktops, counter and table areas, the work surface varnish is recommended.
- The surfaces can be painted and are available in nearly any color.

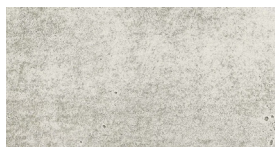
USAGE OPTIONS:

E.g. furniture, inner doors, furniture fronts, shop and trade fair constructions, interior design, e.g. wall panels, shape bonds, etc.

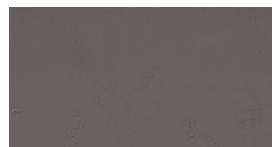
DESIGNS:



VISION CONCRETE
D.MBT.100



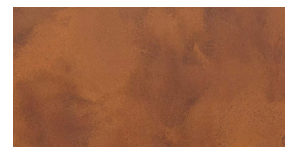
VINTAGE CONCRETE
D.MBT.101



ANTHRACITE CONCRETE
D.MBT.102



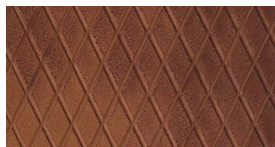
RUSTIC CONCRETE
D.MBT.103



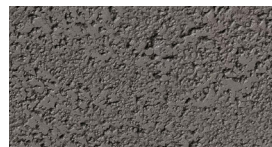
FINO RUST
D.MBT.200



RUVIDO RUST
D.MBT.201



ROMBI RUST
D.MBT.200



GRIGIO ASPHALT
D.MBT.500



OXIDE ASPHALT
D.MBT.501

TECHNICAL DATA:

Dimensions: 4ft x 10ft	Aria Concrete	Aria Rust	Aria Rust	Aria Asphalt
Surface	vision, vintage, anthracite, & rustic	fino & ruvido	rombi	grigio & rust
Coating thickness	approx. 1-2 mm	approx. 1-3 mm	approx. 1-3 mm	approx. 1-4 mm
Suitable for inner radii as of	approx. 2 in	approx. 2 in	approx. 4 in	approx. 6 in
Suitable for outer radii as of	approx. 6 in	approx. 6 in	approx. 6 in	approx. 10 in
Weight	approx. 6 ^{1/2} lbs.	approx. 6 ^{1/2} lbs.	approx. 6 ^{1/2} lbs.	approx. 7 lbs.

PROCESSING:

Sawing/drilling/milling	With regular carbide-equipped tools. Diamond-equipped tools are not necessary.
Screws	Screw extraction resistance as in MDF, pre-drilling is recommended.
Cleaning/care	The Aria surface must be treated like a normally veneered, painted surface. Cleaning is possible with a mist-moistened rag.
Bond	<ul style="list-style-type: none"> · Commercial wood glues · Cold pressing · Pressure 200 kg/m · For the time of pressing, observe the processing notes of the glue manufacturer or the glue. · Additions depending on foam film structure / corrugated cardboard or insulating boards.
Counter-pull	We recommend a 0.8 - 1 mm thick HPL as counter-pull. Unilateral mineral coating means that slight distortions cannot be excluded.
Packaging	Lying on pallet.
Storage	Store dry, interim layers with foam foil or corrugated cardboard. Protect from frost.
Recycling	Product is ecologically harmless, can be recycled and disposed of in the household waste.

Information is provided according to our best knowledge. The contents are, however, not legally binding. The user is not released from verifying that the materials are suitable for the intended purpose. Technical changes reserved. Samples of these minerals show only the general looks and can never combine the properties of color, texture, structure and joints. Differences of any kind, as well as air inclusions, are natural and not any reason for complaint. Small distortions cannot be fully excluded.